
NC CATHETER DRILL



kati.one

The kati.one is a computerised drill for high precision manufacturing of lateral and central catheter hole drillings in multi-lumen catheter tubes with an outside diameter of up to 5.5mm (standard) and a length of up to 150.0mm (standard).

It can work on catheters with different amounts of lumen. After releasing the start pulse, the cutting tool drills the previously set position up to the predefined depth. All procedures are shown on a touch panel.

The kati.one is equipped with three traversing axis. Rotational axis are integrated in each of the motorised z and x-axis. The z-axis provides the rotating cutting tool. Positioned for each individual cutting position, the x-axis is responsible for the linear shift and turning of the catheter.

The lateral positioning of the cutting tool towards the catheter (y-axis) can be set via a micrometer screw. The y-axis can also be motorised (option).

The waste produced during the process is suctioned and disposed of via a closed system. Thanks to the precise construction with its smooth surfaces, maintenance and care can be done simply and quickly.

The kati.one is designed and optimised for use under cleanroom conditions. It is solely being manufactured by our business in Munster, Germany.

We also offer the development of custom solutions for special applications.

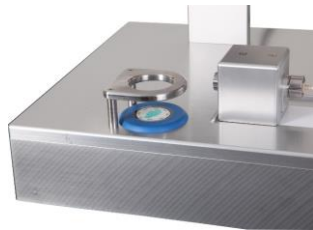


FEINTECHNIK Telefon: +49 . (0)251.96115-0
R.Rittmeyer GmbH Telefax: +49 . (0)251.624 525
Höltzenweg 103 E-mail: info@rittmeyer-beri.de
48 155 Münster Web: www.rittmeyer-beri.de
Germany

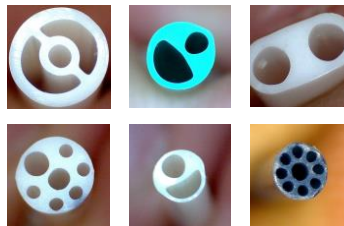
ADVANTAGES & INNOVATIONS OF KATI.ONE

Mechanics

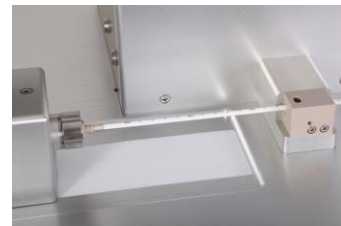
- x and z-axis with integrated rotational axis; motorised
- Fine adjustable y-axis via micrometer screw (optional, as motorised axis)
- Cleanroom optimised construction for easy cleaning
- Smooth surfaces and covered traversing mechanics
- Standard holding fixtures for cutting tools (ER 20; DIN 64 99)
- Edition without fan to avoid particle turbulences
- Waste-free operations thanks to a closed, waste disposal system
- Blow out and emission function for cutting waste integrated in mandrel
- Simple and quick tool exchange to different catheters
- Tool kit for a catheter included in delivery



Optical sensor for start



Catheter examples



x-axis and catheter block

Controls

- Proprietary be-ri control system with simple menu navigation
- Programmable x and z-axis with integrated rotational axis
- y-axis positionable via micrometer screw
- Visualisation of individual process steps on a touch screen
- Programmable catheter and tool lists
- Production supported scanning for safe working
- Three levels of authorisation (handling; setup; service)
- "Windows 7 embedded" is integrated
- USB ports
- 99 drills, and respective work stages programmable per catheter (extendable)
- Every language, and respective individual terminology is programmable
- Simple language switches on all levels
- Integrated parts counter
- Integrated with the Internet (optional)
- Dimensions selectable between "inch" and "mm"
- Online remote servicing and software updates (integrated team viewer)
- Duration - integrated auto-run feature
- Programmable engine speed and positioning

Hardware

- Panel PC
- Touchscreen (protection class IP 65)

* For further information, please visit our website www.rittmeyer-beri.de.